

HAMILTON

Hamilton One

Connect. Predict. Perform.

One solution connecting instruments, data, and people.



Scale operations, optimize resources, and make data-driven decisions by unifying instrument monitoring, compliance support, and maintenance in one platform. HamiltonOne® is Hamilton's cloud solution that connects your Hamilton instruments to a unified digital environment, delivering real-time monitoring, centralized documentation, and predictive maintenance.



Remote Monitoring

Stay informed anytime, anywhere. The intuitive dashboard provides live status updates, method progress, user inputs, error messages, and email notifications for all connected instruments.



Device Documentation

HamiltonOne centralizes all your critical documentation as trace files, manuals, and service reports in one secure, always-current location. From compliance records and audit trails to user actions and historical data, everything is organized in one location¹.



Predictive Maintenance

Shift away from reactive maintenance to a proactive approach with HamiltonOne. By predicting potential equipment failures early, the platform enables scheduled repair visits, reducing unexpected downtime.

Technology Setup

HamiltonOne is powered by Microsoft Azure, delivering secure, scalable enterprise-grade cloud infrastructure.

- Identity & Access Management: HamiltonOne supports Microsoft Entra ID for Single Sign-On (SSO). Customers can leverage their own Microsoft environment for user management, enabling seamless onboarding and role assignment through their existing IT processes.
- Seamless user experience on mobile devices including email alerts.
- Prerequisite: Pipetting instruments must run VENUS® 6.3 or higher to enable API functionality. To confirm compatibility of your Hamilton storage device, please contact your Hamilton representative.
- The instruments transmit data securely through the Hamilton Cloud Connector software, using AMQP with TLS encryption on port 5671 (fallback to 443), eliminating complex firewall configurations.
- Data stored in Microsoft Azure Switzerland North region² and Microsoft Azure West US region.

Cybersecurity and System Stability

HamiltonOne is protected by WAF rules, constantly monitored and undergoes regular penetration tests by independent experts. Policies and procedures managed by our Information Security Management System (ISMS) ensure highest standards for both operation and development.

How to obtain HamiltonOne

Getting started with HamiltonOne is simple and flexible: choose to include it in your Hamilton Service Contract or opt for a standalone license. Enjoy seamless access to the cloud features and all future functionality updates are free of charge.

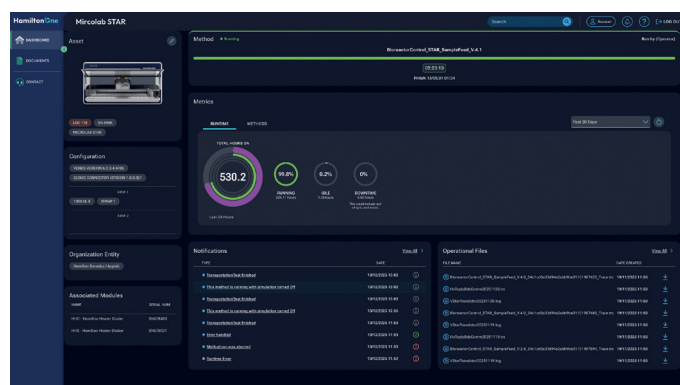
Ordering Information

HamiltonOne License	Contact your sales representative for more information
HamiltonOne Service Contract Add-On	Contact your local service representative to include HamiltonOne in your contract

Demo it now



<https://demo.hamiltonone.dev>



¹ For launch, Operators Manual, Programmers Manual and Type Label are planned. Further documents will be implemented in future releases.

² Switzerland is recognized by the EU as providing a level of data protection equivalent to that of the EU, allowing data transfers without additional safeguards.

© 2026 Hamilton Company. All rights reserved. All trademarks are owned and/or registered by Hamilton Company in the U.S. and/or other countries. Lit. No. F-2512-06 – 01/2026

HAMILTON

Hamilton Americas & Pacific Rim
Hamilton Company Inc.
4970 Energy Way
Reno, Nevada 89502 USA
Tel: +1-775-858-3000
Fax: +1-775-856-7259

Hamilton Europe, Asia & Africa
Hamilton Bonaduz AG
Via Crusch 8, CH-7402 Bonaduz,
GR, Switzerland
Tel: +41-58-610-10-10

